

VERTEX S.A.

43-502 Czechowice-Dziedzice
ul. Bestwińska 25

NIP: 638-15-32-552

tel.: +48 (032) 214 53 30(31)

fax: +48 (032) 214-53-40

poczta@vertex.pl

www.vertex.pl

ASSEMBLY INSTRUCTION

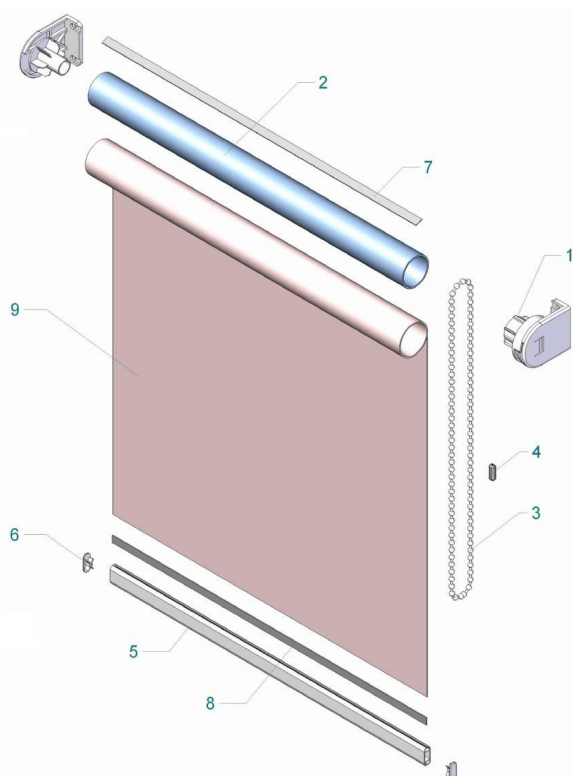
ROLLER BLIND

LARGO

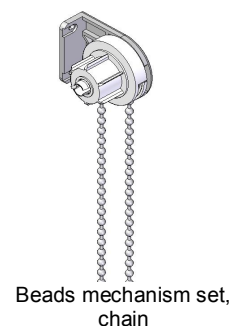


Vertex S.A.

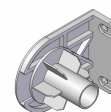
Components



1. Mechanism
2. Tube $\varnothing 42\text{mm}$
3. Chain operational
4. Chain connector
5. Bottom rail
6. Bottom rail end cap
7. Double-side adhesive tape
8. Blockade tape
9. Fabric



Beads mechanism set,
chain



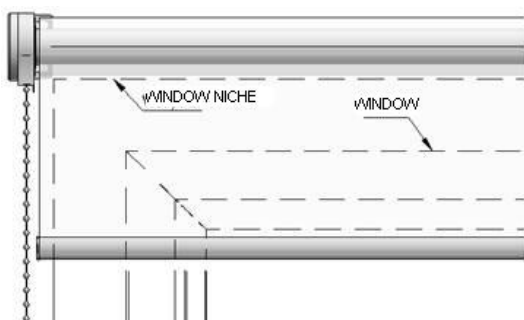
Hanger



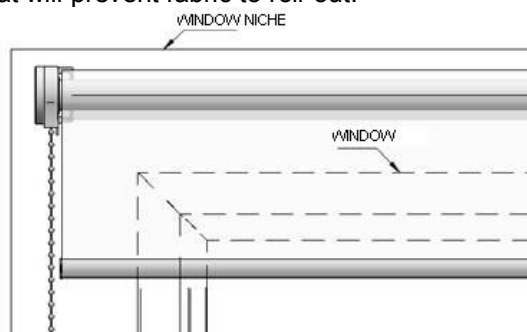
Chain connector (1pcs)

Assembly:

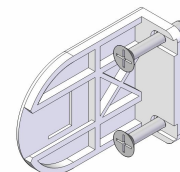
1. Assembly is possible on wall (pic 1) or in window niche (pic 2)
2. Before assembly in window niche it is necessary to check if it's still possible to open the window after assembly
3. Place the blind in the correct place (pic 1),
4. Level the blind – **NOTICE: wrong level of the blind could cause problems with closing the blind fabric**
5. Mark places for the screws, install hangers using wall plugs (pic.3)
6. Clip the mini chain connector in a place that will prevent fabric to roll-out.



Picture 1



Picture 2



Picture 3