

VERTEX S.A.

43-502 Czechowice-Dziedzice
ul. Bestwińska 25

NIP: 638-15-32-552

tel.: +48 (032) 214 53 30(31)

fax: +48 (032) 214-53-40

poczta@vertex.pl

www.vertex.pl

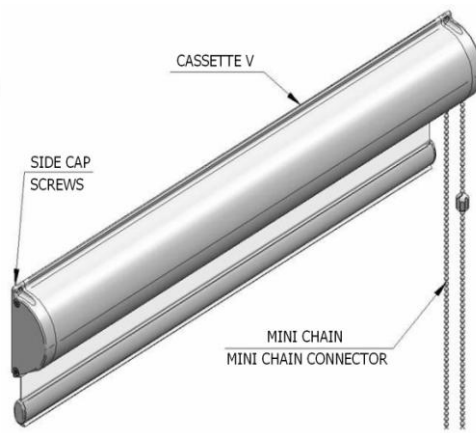
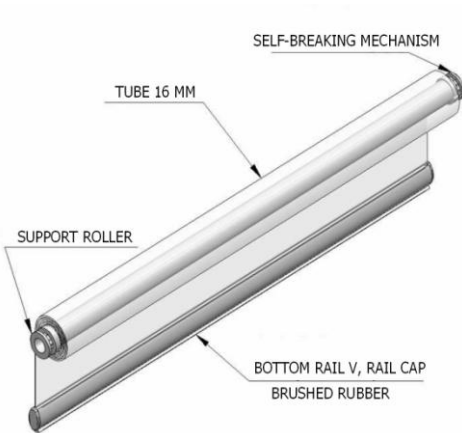
ASSEMBLY INSTRUCTION

ROLLER BLIND



Vertex S.A.

Components:



30 mm
Fabric guiding profile V
Flat with 2 side foam
tape
(2 pcs, made to measure)



Extra elements:



Side cap plugs
(right, left)

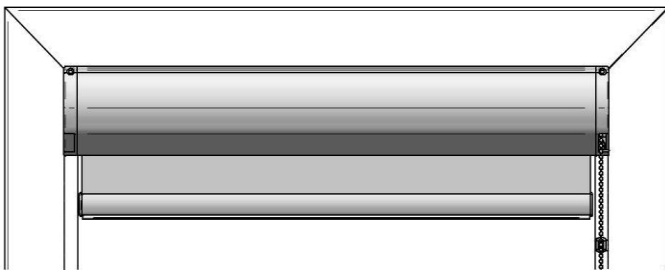


Screws spax 2,5x12 (4
pcs.)

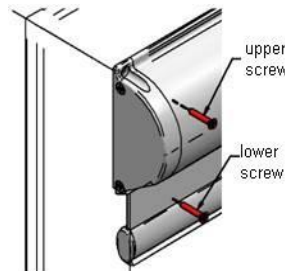


Assembly on window:

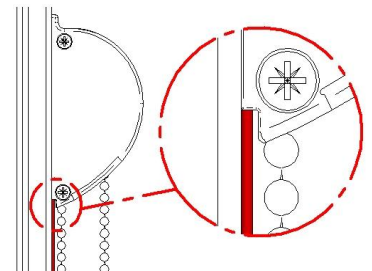
1. Place blind on the window frame in the correct place (pic 1)
2. Level the blind – **NOTICE: wrong level of the blind could cause problems with closing the blind fabric**
3. Screw side caps with 4 screws – do not tighten the lower screws (pic 2)



Picture 1



Picture 2

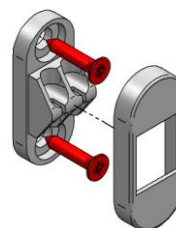


Picture 3

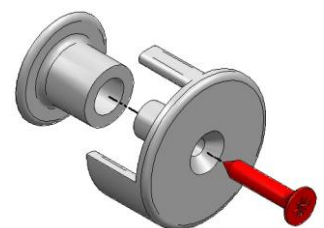
4. Clean window surface with included degrease-tissue in places where guiding profiles will stick to the window frame.
5. Stick the guiding profiles to window, start from the upper end and make sure that the beginning of the channel is placed under the blind side cap (pic 3)
6. Tighten the lower screws in side caps
7. Clip in the side cap plugs (pic 4)
8. Clip the mini chain connector in a place that will prevent the fabric to roll-out
9. Screw the chain stopper to window frame (pic 5) – optional
10. Screw the chain tensor to window frame (pic 6) - optional



Picture 4



Picture 5



Picture 6