

VERTEX S.A.

43-502 Czechowice-Dziedzice  
ul. Bestwińska 25

NIP: 638-15-32-552

tel.: +48 (032) 214 53 30(31)

fax: +48 (032) 214-53-40

poczta@vertex.pl

www.vertex.pl

# ASSEMBLY INSTRUCTION

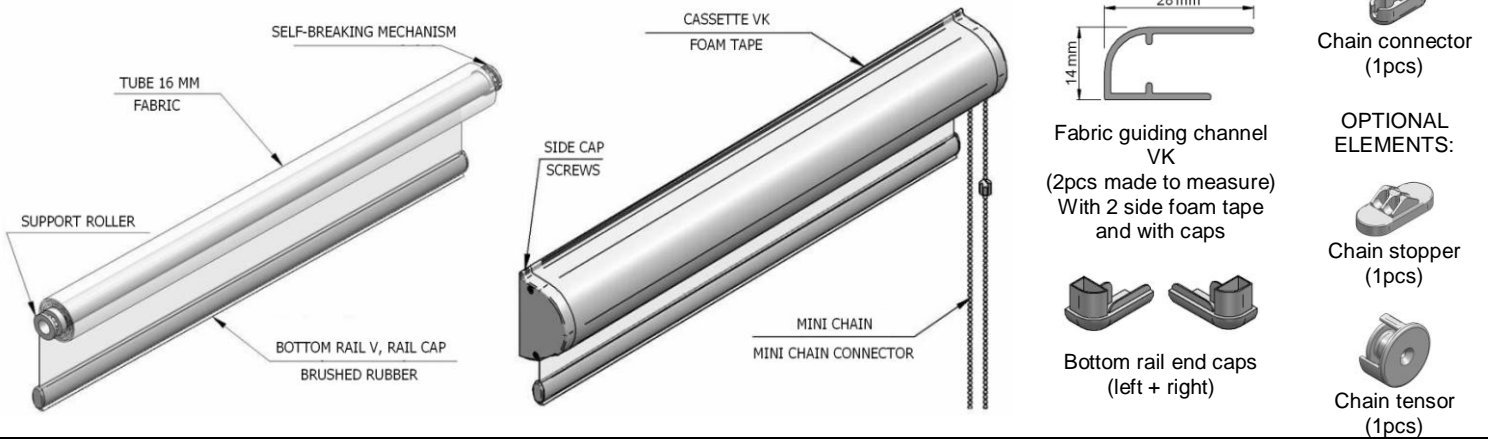
ROLLER BLIND

**suita**



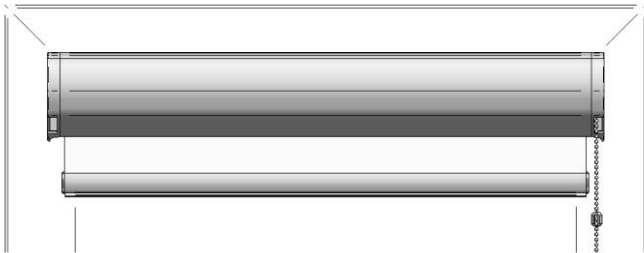
Vertex S.A.

## Components:

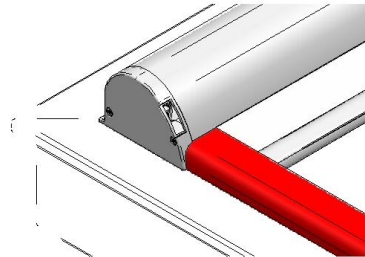


## Assembly on window:

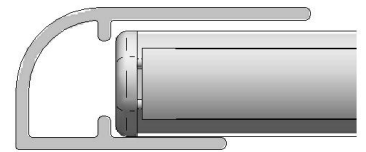
1. Clean window surface with included degrease-tissue in places where cassette and guiding channel will stick to the window frame.
2. Place blind on the window frame in the correct place (pic 1)
3. Level the blind – **NOTICE: wrong level of the blind could cause problems with closing the blind fabric**
4. Stick the cassette to the window



Picture 1

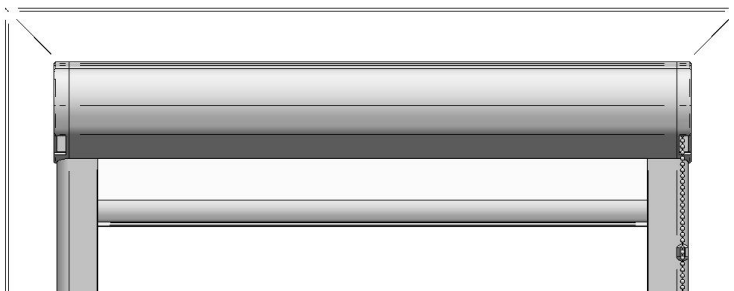


Picture 2

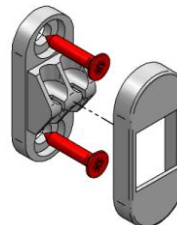


Picture 3

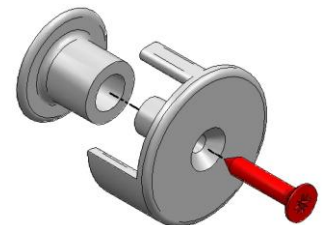
5. Insert upper end of guiding channel into the niche in side caps, push them to the end (pic 2)
6. Insert bottom rail into guiding channels (pic 3)
7. Stick the guiding channels to the window frame (pic 4)
8. Clip the chain connector in a place that will prevent the fabric to roll-out
9. Screw the chain stopper to window frame (pic 5) – optional
10. Screw the chain tensor to window frame (pic 6) - optional



Picture 4



Picture 5



Picture 6